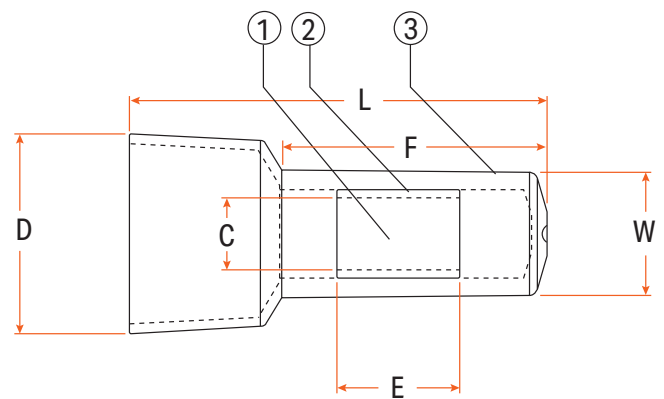


Cable Termination

Closed End Connectors

- **Materials:** Conductor: Copper.
Insulation: Nylon.
Plating: Tin.
- **Operating Temperature:** -40°C to +105°C.
- **Features:** Max. voltage rating: 600V.



Material

- ① Copper
- ② Tin
- ③ Nylon

Item No.	Colour	Wire Range (mm ²)	Dimensions (mm)					
			C	D	W	L	E	F
WT75	Natural	0.5-1.5	2.6	5.5	5.0	18.2	6.9	12.5
WT76	Natural	1.5-2.5	3.3	8.0	5.5	20.0	6.9	13.0
WT77	Natural	4.0-6.0	4.5	11.0	7.5	25.5	7.5	16.2